

PROPOSED:

2D POTOMAC RIVER SPILL MODEL

Cherie Schultz, Ph.D.
Director, CO-OP
Operations
Interstate Commission on
the Potomac River Basin

POTOMAC BASIN SPILL RESPONSE

ICPRB staff receive notification
(24/7!)

Spill model generates travel
times & peak concentrations

Downstream utilities are notified

When reporting a spill to ICPRB, please provide the following:

1. Name and telephone number;
2. Location of spill, including
 - a) name of affected stream and
 - b) street address and/or latitude and longitude;
3. Identity of spill material; and
4. Estimated quantity of material spilled (total mass or volume or discharge rate).

CURRENT SPILL MODEL(S)

Simulate longitudinal transport of dissolved contaminants (1D)

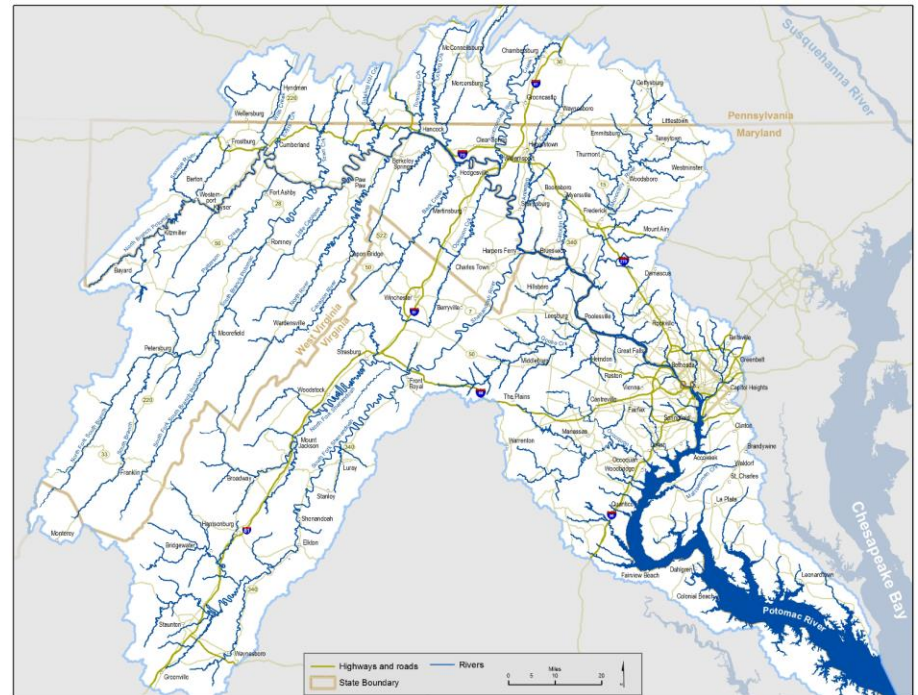
- ICPRB's spill model
- RiverSpill
- IC Water

Strengths

- Few data needs
- Quick results

Limitations

- Do not simulate floating contaminants
- No info provided on transverse migration



PROPOSED:

POTOMAC RIVER 2D SPILL MODEL

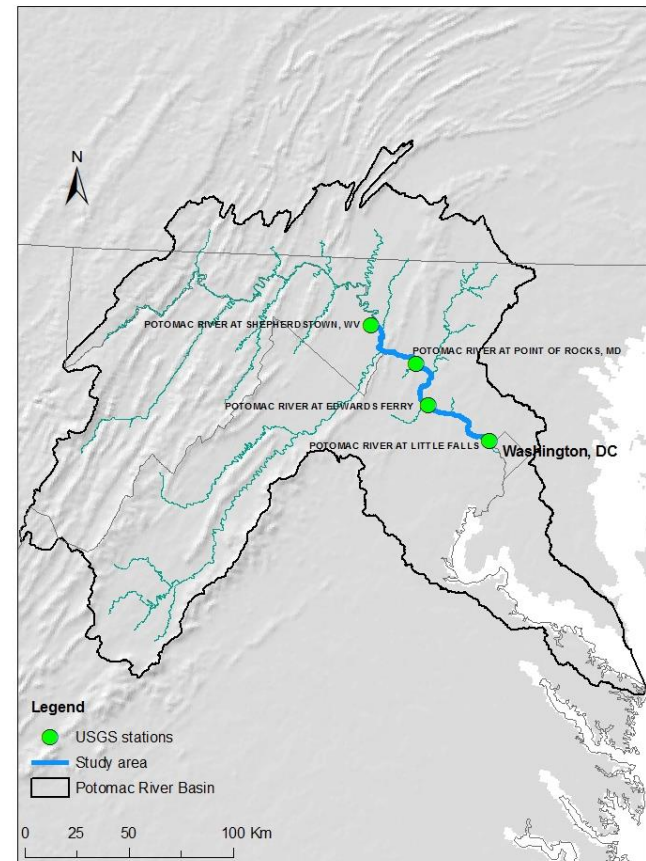
Objective: Predict longitudinal and transverse transport of floating contaminants in Potomac mainstem

Phase 1

- Collect LIDAR bathymetric data for the Potomac mainstem
- Construct steady flow GNOME* model

Phase 2

- Construct unsteady flow model and couple to GNOME



*General NOAA Operational Modeling Environment

GNOME

From NOAA's Office of Response and Restoration

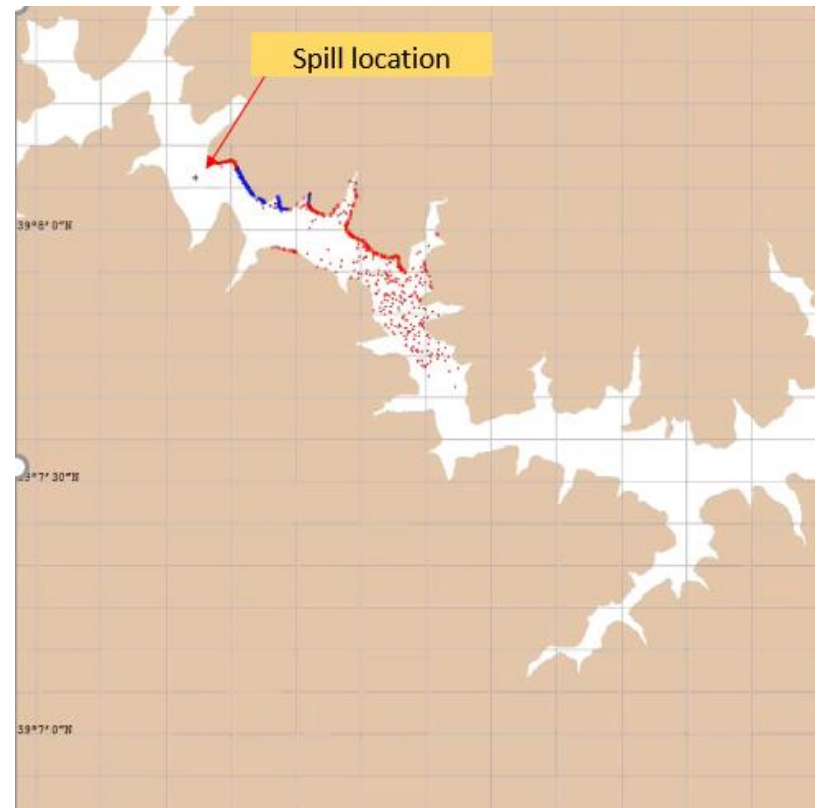
Predicts fate and transport of oil on water bodies

- Movement due to currents & wind
- Chemical and physical "weathering"

Requires bathymetric data

GNOME steady flow models (ICPRB)

- WSSC's Rocky Gorge Reservoir
- Fairfax Water's Occoquan Reservoir



GNOME simulation of distribution of oil in Rocky Gorge

PROJECT STATUS — EXPLORATORY PHASE

ICPRB & USGS are discussing potential Potomac mainstem LIDAR bathymetry project

- Additional science applications?
- Possibility of broader partnerships?
- Funding sources?

