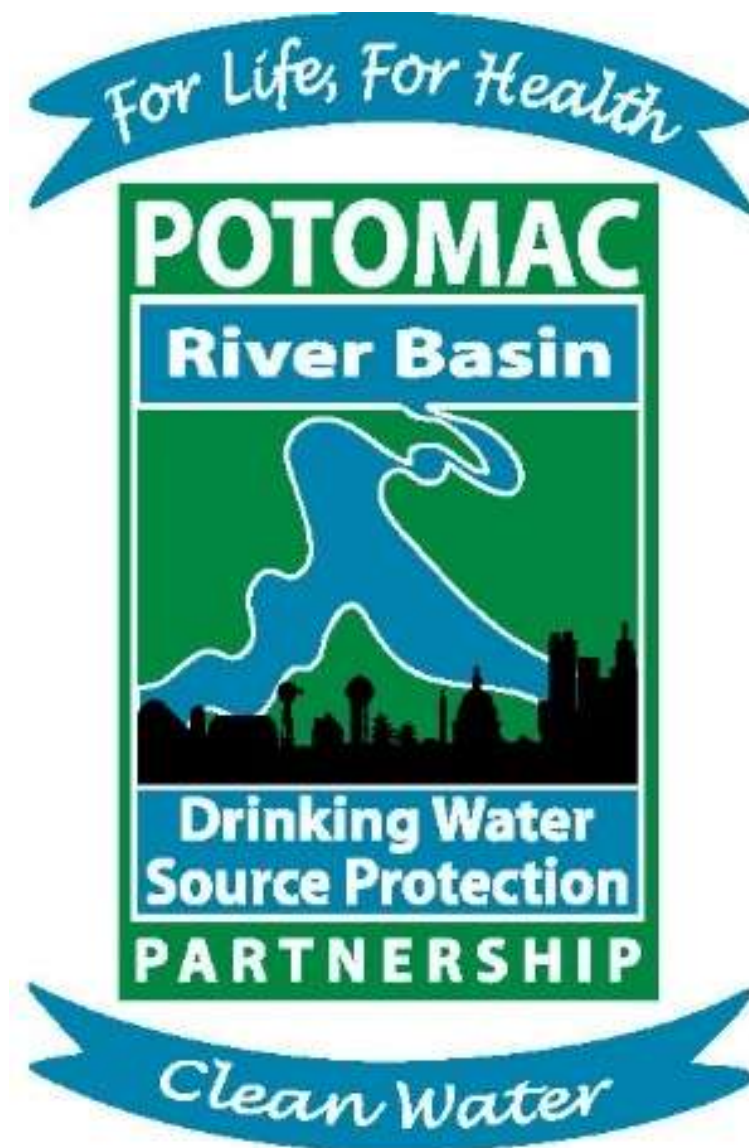


SOURCE WATER PROTECTION IN THE POTOMAC RIVER BASIN – A STORY MAP

May 1, 2019

Kathleen McAllister, Horsley Witten
Group



SOURCE WATER PROTECTION IN THE POTOMAC RIVER BASIN

1. Background
2. A public-facing resource
3. Content development
4. Why a Story Map
5. Demonstration



1. BACKGROUND

2002 DC SWA

Expanding utilization of WaterSuite

- Online monitoring
- Identification of potential contamination sources/inventories

Ongoing source water protection efforts across the basin

Where can we contribute?

The District of
Columbia
Source Water
Assessment



Environmental
Health Administration

Bureau of
Environmental Quality

Water Quality
Division



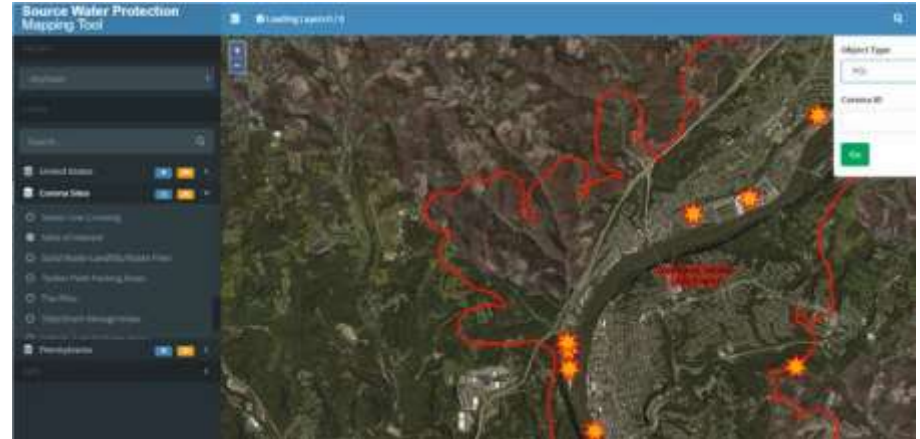
2. A PUBLIC-FACING RESOURCE

WaterSuite helps utilities with technical source water assessment activities

Highlights the ongoing SWP efforts in the Potomac Basin

Provides users with an easily streamlined interface to see information and access data

Tells a story...



3. CONTENT DEVELOPMENT

Conducted interviews – Water utilities, ICPRB, MWCOG, EPA Chesapeake Bay Program, EPA R3, VA DEQ, WaterSuite/Corona

Reviewed relevant reports, literature, & collected and analyzed data

Developed content first, then moved it into ArcGIS Story Map format

4. WHY ARC GIS STORY MAP?

Benefits

Built on EPA's ArcGIS Online account
(HW guest user access)

Easy review for EPA

Easy for HW to make edits, update

Ability to reach more stakeholders
online

Drawbacks

Templates are limited

Some people still like paper copies

QUESTIONS?

Cathy Magliocchetti

Source Water Protection Team

EPA Region III

magliocchetti.catherine@epa.gov

215.814.2174

Kathleen McAllister

Senior Environmental Planner

Horsley Witten Group

kmcallister@horsleywitten.com

774-413-2999, ext. 204